

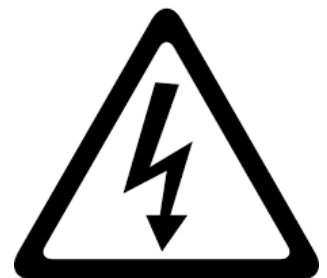
# S&D Consulting Engineers (Pty) Ltd

Electrical, Mechanical Engineering & Construction Project Management

*Making Our Future More Vibrant and Sustainable*



## Company Profile



**Physical Address.:** 12 Amatola Place; Bisho; 5605 **Postal Address.:** P.O. Box 1100; White River; 1240

**Tel.:** 087 550 2551/061 433 6468 **Cell.:** 083 999 6133 / 076 250 2900 **Fax.:** 086 549 7957 **Email.:** admin@sanddconsulting.co.za

**Reg No.:** 2014/053488/07 **Vat No.:** 4750265755 **Tax No.:** 9583180170 **Website.:** www.sanddconsulting.co.za

**Directors.:** Ms Nomkhosi Patience Nkosi (Business Manager) & Mr Lungelo Pukliso Dlamini, Pr Techni Eng (Electrical Engineer)

## S & D Consulting Engineers (Pty) Ltd

S & D Consulting Engineers (Pty) Ltd is a multidisciplinary professional engineering service provider that renders consulting services in the fields of Electrical, Mechanical Engineering and Construction Project Management. The company was established in 2014 as a private company and is 100% black owned. The Directors have years of experience in the design, construction and project management of major projects, experience gained over the years.

At S & D Consulting, impeccable ethics and professionalism are an operating standard. They are derived from a business ethos founded on trust and personalized service, and our belief that total professionalism is required in our interactions with all our stakeholders. The firm is registered with the Southern African Black Technical and Allied Careers Organization (SABTACO). The company is committed to the principles of broad based Black Economic Empowerment and is currently a Level 1 (one) B-BBEE compliant company.

### Words from the Director

S & D Consulting Engineers (Pty) Ltd offer a broad spectrum of advisory, design and project management services in electrical and mechanical engineering, including statutory compliance and site management. The company consists of a team and associates of registered professionals with skills to execute any project in the different engineering disciplines offered. We strive to keep up to date with modern technology, design techniques and systems.

Like someone once said, “If you want to build a ship, do not herd people together to collect wood and do not assign those tasks and work, but rather teach them to long for the endless immensity of the sea”. Given the opportunity, we at S & D Consulting strive to be a reputable and significant role player in the provision of engineering and project management services by combining all applicable problem solving skills to provide solutions that are functionally sound, economically feasible and practical, while maintaining a matching standard of technical excellence.

Thank You

Lungelo Pukliso Dlamini, Pr Techni Eng, MSAIEE, MCOET, PMSA  
Director (Electrical Engineer)



## Mission Statement

S & D consulting is committed to provide good services and project management solutions in the different engineering disciplines. Render high quality and cost effective services. We will continually strive to improve our performance and enhance job satisfaction and pride in our organization. We are also committed to community upliftment through transferring of skills using labour intensive methods.

## Vision

S&D Consulting aims to optimize the resources and open other branches within the country and beyond its borders.

We aim to create an environment conducive for projects and programmes to achieve their objectives, providing a complete institutional, social development that will enable communities and services providers to provide services to stakeholders on a project life cycle.

## Core Values

At S & D Consulting Engineers (Pty) Ltd, impeccable ethics and professionalism are an operating standard. They are derived from a business ethos founded on trust and personalized service, and our belief that total professionalism is required in our interactions with all our stakeholders.

Our client's satisfaction is a constant measure of achievement for our team. While there is no doubt that this satisfaction is due to our commitment to our clients, it is also directly related to the values through which S & D Consulting manages its operation. These include:

- Leadership
- Innovation
- Integrity
- Honesty
- Fairness
- Individual Contribution
- Reliability
- Strong Work Ethics



## The Team

The team that the company has assembled consists of registered professionals with years of experience in the design, construction and project management of major project in the different engineering disciplines offered.

The team at S & D Consulting strives to keep up to date with modern technology, design techniques and systems, and as a result we offer one of the most innovative electrical, mechanical design, construction and project management services available.

## Team Leader

**Lungelo Pukliso Dlamini**, Pr Techni Eng, MSAIEE, COET, PMSA, SABBACO

Lungelo holds a National Diploma in Electrical Engineering (Heavy Current) from Tshwane University of Technology and have over six years professional experience in Project Engineering and Management in the electrical utility environment, projects management and consulting engineering. His main areas of expertise includes project planning, design, detailed technical specifications, feasibility studies, project management and construction supervision of distribution systems, rural and township electrification projects, reticulation projects, high mast and street lighting and commercial building installations. This includes the Modulation of design by means of load simulation programmes and supervising CAD drawings and design layouts.

Lungelo has successfully completed a number of projects as a Project Engineer for various sectors which includes Eskom, Municipalities, consulting firms and private institutions.



## Services Offered

S & D Consulting Engineers (Pty) Ltd as a professional consulting engineering firm we offer services in the field of electrical and mechanical engineering, construction and project management. Our experienced team of dedicated engineers enables us to offer our clients an extensive range of practical and innovative engineering solutions and services.

## Detailed Capabilities

### 1. Electrical Engineering

S & D Consulting has a team of Electrical Engineers that provide designs for new, existing, distribution systems, rural and urban reticulating systems, or to-be-refurbished industrial and commercial premises, with due consideration to integrity, reliability, aesthetics, cost efficiency, statutory requirements and specific client application for.

#### LV and MV Electrical Reticulation (Overhead and underground reticulation)

- Electrification Projects of urban and rural communities,
- High Mast, Street and Area lighting.
- Substations Designs.
- Engineering, Procurement and Construction Management.
- Solar Energy Management System
- Electricity Master Plan



#### Electrical Installations in building industry, Earthing and Lightning Protection

- Office Buildings,
- Housing projects and Apartment Buildings,
- Schools, Clinics, etc.
- Building Structures and Property Development
- Access Control and CCTV Systems Design
- Uninterruptable power systems
- Maintenance contracts
- Refurbishing existing installations
- Statutory compliance assessments and designs
- Urban development
- Green building application and designs



#### Industrial/ Mining Maintenance and Installation

- Automation and Switchboards, MCC Building and Installation.
- Electrical Energy Utilization Improvements,
- Electrical System Maintenance, Protection Relay Testing and Commissioning.
- Variable speed drives fault finding- AC & DC Industrial/ Mining Instrumentation and Control Systems and PLC's

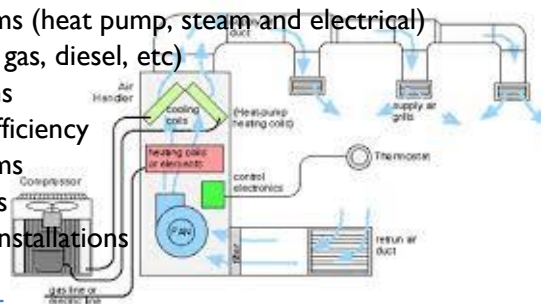


## 2. Mechanical Engineering

Our dynamic and experienced Mechanical Engineers have the capacity to provide comprehensive and value-driven design and project management services that provide designs for mechanical and statutory engineering projects.

### Mechanical Installations in the building industry and Fire Protection

- Air Conditioning & Ventilation systems
- Fire detection system and gas extinguishing systems
- Fire protection(gas and water)
- Central heating and centralised hot water generating
- Kitchen and laundry equipment
- Security systems, including CCTV, access and egress control
- Audio Sound, public address, sound masking and conferencing systems
- Time and attendance systems
- Elevator and escalator installations
- Building Management Systems
- Plumbing and piping installations
- Central vacuum cleaning systems
- Central hot water systems (heat pump, steam and electrical)
- Boiler installations (coal, gas, diesel, etc)
- Water treatment systems
- Energy Management & Efficiency
- Steam reticulation systems
- Refrigeration installations
- Cold and freezer room installations



## 3. Project Management

We have the capacity to provide comprehensive and value-driven design and project management services involving labour intensive construction methods. Our dedicated and professional team has built a reputation for providing innovative and targeted solutions to ensure on-time delivery, quality results and cost-effective construction and operating costs.

### Project Management and Construction Supervision

- Feasibility reports with cost estimates and alternative design proposals
- Engineering design based on project scope
- Detailed project planning, programming engineering design and technical specifications
- Contract documentation including price schedules and bills of quantities
- Tender Processes
- Material Management and Quality Assurance
- Contract administration
- Project and construction management
- Financial administration and control
- Commissioning and Project Closeout



## Quality Policy Statements

S & D Consulting Engineers (Pty) Ltd recognize and acknowledge the role that controlled quality plays in the continuous success of Consulting Engineers. We strive to be the leaders in the industry, offering cost-effective, innovative and practical solutions without any compromise in quality.

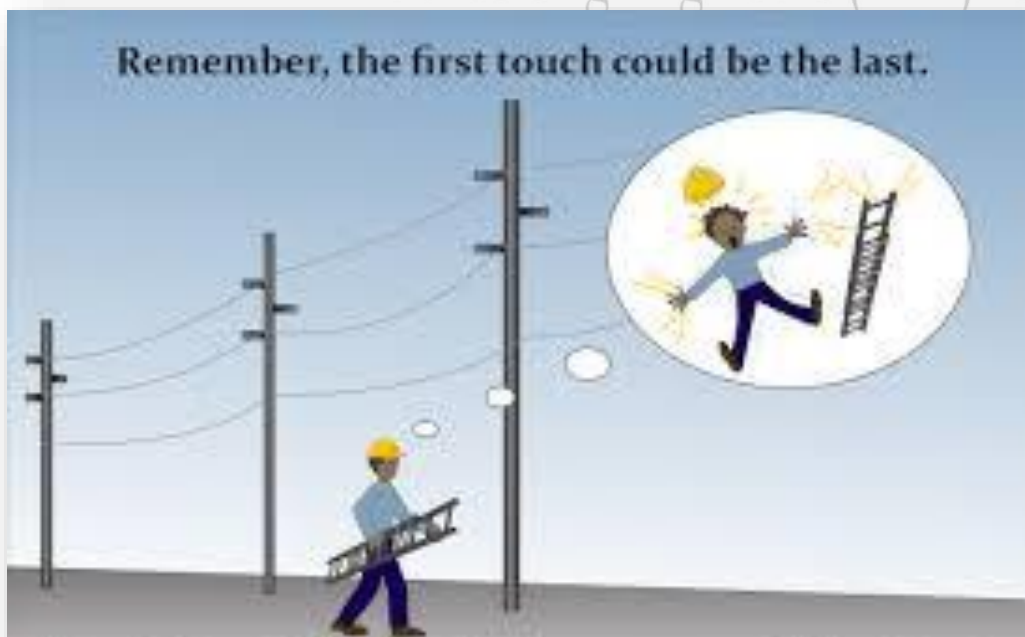
To achieve these policy objectives, the company has committed itself to comply with the requirements of ISO 9001 Quality Management System.

The objectives of our quality system are

- To meet requirements of clients in a cost effective and timely manner by partnering with our clients and ensuring that projects are properly planned from inception through all phases of delivery and outputs are verified and approved.
- To minimize risks including potential loss of goodwill, credibility and reputation by proactively identifying, monitoring and treating risks.
- To build beneficial relationships with our vendors and those to whom we supply internally by clearly defining procurement requirements and continuous monitoring.
- To empower our staff to meet requirements of any legislation and/or regulatory requirements relevant to, S & D Consulting.

We recognize that this requires a clear commitment by management to the application and continual improvement of the quality system.

Consulting Engineers (PTY) Ltd



## Environmental Policy

S & D Consulting Engineers (Pty) Ltd is committed to providing a quality service in a manner that ensures a safe and healthy workplace for our employees and minimises our potential impact on the environment. We will operate in compliance with all relevant environmental legislation and we will strive to use pollution prevention and environmental best practices in all we do

It is our priority to encourage our customers, suppliers and all business associates to do the same. Not only is this sound commercial sense for all, it is also a matter of delivering on our duty of care towards future generations.

Our policy is to:

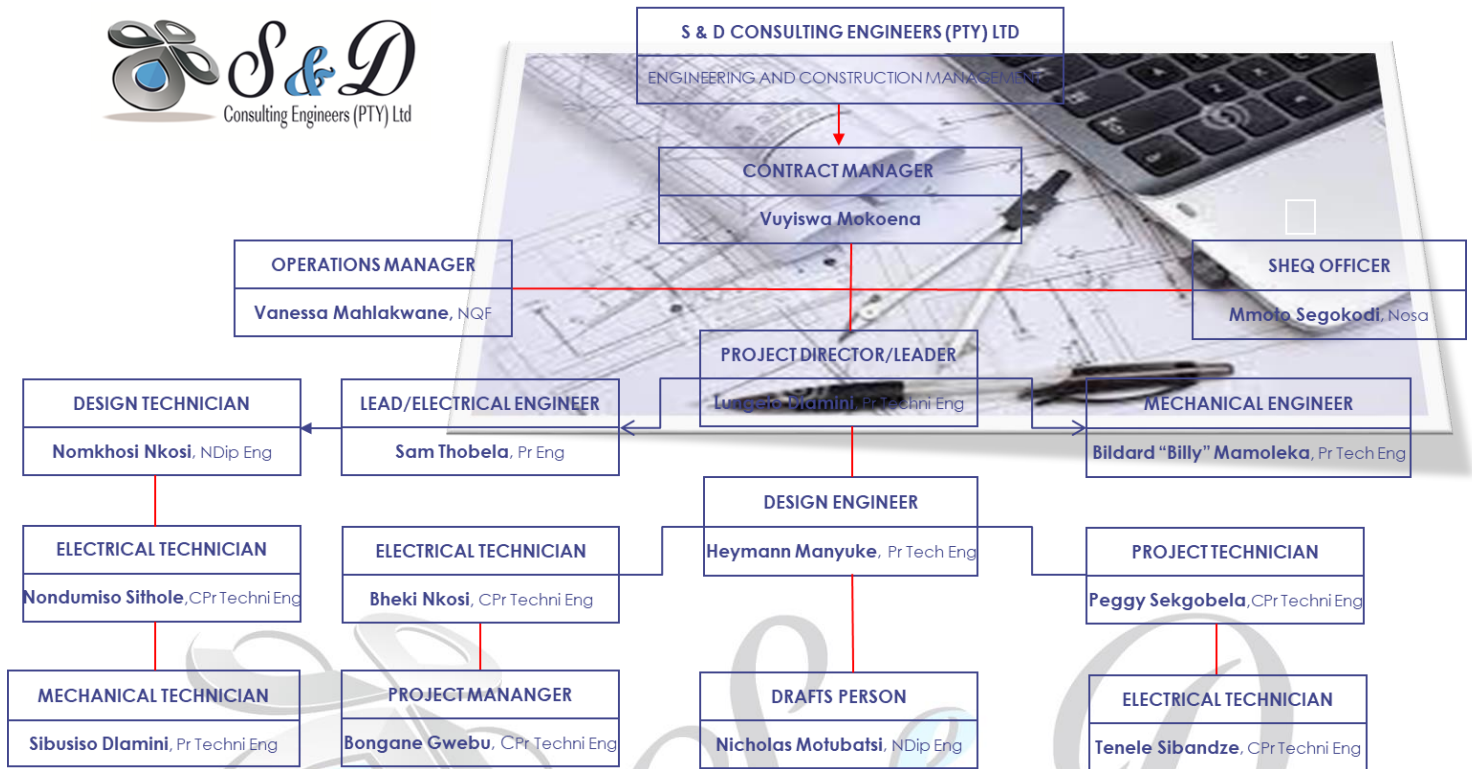
- Promote environmental awareness among our employees and encourage them to work in an environmentally responsible manner.
- Train, educate and inform our employees about environmental issues that may affect their work.
- Reduce waste through re-use and recycling and by purchasing recycled, recyclable or re-furnished products and materials where these alternatives are available, economical and suitable.
- Promote efficient use of materials and resources throughout our facility including water, electricity, raw materials and other resources, particularly those that are non-renewable.
- Operate and maintain company vehicles (where appropriate) with due regard to environmental issues as far as reasonably practical and encourage the use of alternative means of transport and car sharing as appropriate.
- Apply the principles of continuous improvement in respect of air, water, noise and light pollution from our premises and reduce any impacts from our operations on the environment and local community.



# Resources

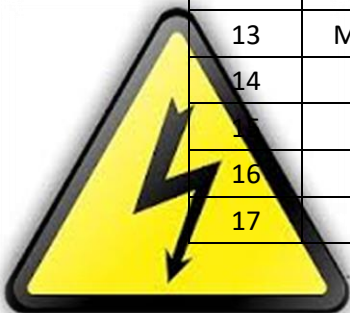


## Organization Structure



## Equipment, Plant and Softwares

Item	Description	Quantity	Own/Licensed
1	Dell Laptops	2	Own
2	Samsung Laptop	1	Own
3	Lenovo Laptop	3	Own
4	Ricoh A3/A4 Colour Printer	1	Leased
5	HP Plotter	1	Own
6	Toyota Hilux (JBW 451 MP)	1	Own
7	Toyota Auris (JGY 541 MP)	1	Own
8	Renault Clio IV (JGY 544 MP)	1	Own
9	VW Golf 5 (HSY 989 MP)	1	Own
10	Geely 1.5 MK (FYS 319 MP)	1	Own
11	Nissan NP 200 (JLK 814 MP)	1	Own
12	Mercedes Benz C220 (JMD 359 MP)	1	Own
13	Microstation V8i- Design Software	1	Licensed
14	Auto CAD – CAD Program	1	Licensed
15	RSAT 6 - Power Line Profiling	1	Licensed
16	DT-PET 10	1	Licensed
17	MS Projects 2016	1	Licensed



## Projects Experience

We at S & D Consulting pride ourselves on consistently meeting the challenge of projects and compressed construction programmes as we have successfully completed a number of projects. The company is also involved on a number of on-going projects assigned which have been to its office by different entities.

Current and completed projects assigned to the company are listed in the table below:

Project Name and Description	Service Performed	Project Value	Project Status	Owner/Client Details
Electrical Service Provider for Electrification Kwaqondile Village (Ward 7)	Preliminary and detail design, contract administration, construction supervision and commissioning	R 6.0m	Construction	Jozini Local Municipality <b>Mr Mthobisi Nkala</b> (Project Manager) Tel: (035) 572 4142
Appointment for 7 School Programme – Cluster 2	Preliminary and detail design, contract administration, construction supervision and commissioning	Fees	On-Hold	Independent Development Trust (Mpumalanga) <b>Mr Peter Mashiane</b> (Program Manager) Tel: (013) 756 5500
Professional Services (Electrical/Mechanical) for Assessment, Planning, Design and Supervision on the Construction of New Yinhle Lentfo Primary School in City of Mbombela	Assessment, Planning, Design and Construction Supervision	Fees	Phase 1 Construction	Department of Public Works (MP) <b>Ms Phumelele Mathenjwa</b> (Project Leader) Tel: (013) 766 8943
Professional Services (Electrical/Mechanical) for Assessment, Planning, Design and Supervision on the Construction of Magogeni Primary School in Nkomazi Local Municipality	Assessment, Planning, Design and Construction Supervision	Fees	Phase 1 Construction	Department of Public Works (MP) <b>Ms Phumelele Mathenjwa</b> (Project Leader) Tel: (013) 766 8943
Electrical Service Provider for Turnkey Electrification Programme for 560 Households at Ext 17 (Umjindi) within the City of Mbombela for a 3 Year Period	Preliminary and detail design, contract administration, construction supervision and commissioning	R 8.17m	Construction of Phase 5	City of Mbombela <b>Mrs Linge Ngubane</b> (Project Manager) Tel: (013) 759 9091
Provision of Professional Services for The Electrification of 241 Households in Mashishing Ext 6: INEP	Preliminary and detail design, contract administration, construction supervision and commissioning	R 3.74m	Completed	Thaba Chweu Local Municipality <b>Mr Sinenhlanhla Manqele</b> (Project Manager) Tel: (013) 235 7300
Panel of Electrical Engineers for various Municipal Infrastructure and House Connections for the Period of Three (3) Financial Years (17/18, 18/19 and 19/20)	Preliminary and detail design, contract administration, construction supervision and commissioning	8% of Project Value	No Project Allocated Yet	Ndwedwe Local Municipality <b>Ms Mati Nkabinde</b> (Project Manager) Tel: (032) 532 5060

Provision of Professional Services for The Electrification of 500 Households in Mashishing Ext 6: INEP	<b>Preliminary and detail design, contract administration, construction supervision and commissioning</b>	R5m	Completed	Thaba Chweu Local Municipality <b>Mr Sinenhlanhla Manqele (Project Manager)</b> Tel: (013) 235 7300
Provision of Professional Services for The Electrification of 100 Households in Sabie Ext 10: INEP	<b>Preliminary and detail design, contract administration, construction supervision and commissioning</b>	R 1.40m	Completed	Thaba Chweu Local Municipality <b>Mr Sinenhlanhla Manqele (Project Manager)</b> Tel: (013) 235 7300
Provision of Professional Services for The Installation of Energy Efficiency Highmast Lights in All Wards of Thaba Chweu Areas: MIG	<b>Preliminary and detail design, contract administration, construction supervision and commissioning</b>	R13.44M	Completed	Thaba Chweu Local Municipality <b>Mr Ganon Nhubunga (Project Manager)</b> Tel: (013) 235 7300
Professional Services (Electrical/Mechanical) for Assessment, Planning, Design and Supervision on the Construction 10 Classrooms and 10 Ablutions at Masana Secondary School in Bushbuckridge Local Municipality	<b>Design, Documentation, Contract Administration, Construction Supervision and Commissioning</b>	Fees	Completed	Isiphepho Consulting <b>Ms Nomthandazo Khoza (Principal Agent)</b> Tel: (013) 752 3026
Professional Services (Electrical/Mechanical) for Planning, Design and Contract Administration and Construction Supervision of 18 Storm Damaged Schools in Nkomazi Municipality	<b>Design, Documentation, Contract Administration, Construction Supervision and Commissioning</b>	35m	Completed	3 <sup>rd</sup> Dimension Quantity Surveyors <b>Mr Rodgers Sithole (Principal Agent)</b> Tel: 072 942 1154
Appointment to a Panel of Consultants for Electrical Professional Services for a period of 3 years	<b>Preliminary and detail design, contract administration, construction supervision and commissioning</b>	ECSA Rates	No Project allocated Yet	Independent Development Trust (Mpumalanga) <b>Mr Peter Mashiane (Program Manager)</b> Tel: (013) 756 5500
Appointment of Pool of Consultants for Electrical Professional Services at Greater Tzaneen Municipality	<b>Preliminary and detail design, contract administration, construction supervision and commissioning</b>	ECSA Rates	No Project Allocated Yet	Greater Tzaneen Municipality <b>Mr Moswatse Lelope (Manager)</b> Tel: (015) 307 8165
Electrical Service Provider for Turnkey Electrification Programme for 64 Households at Esperado 1 (Vorova/Revolver's creek) within the City of Mbombela Local Municipality	<b>Preliminary and detail design, contract administration, construction supervision and commissioning</b>	R 1.61 m	Completed	City of Mbombela <b>Mrs Linge Ngubane (Project Manager)</b> Tel: (013) 759 9091
Professional Services (Electrical/Mechanical) for Assessment, Planning, Design and Supervision on the Construction of Malengeza Primary School Within Bushbuckridge Local Municipality	<b>Assessment, Planning, Design and Construction Supervision</b>	Fees	On Hold	Department of Public Works (MP) <b>Ms Phumelele Mathenjwa (Project Leader)</b> Tel: (013) 766 8943

Professional Services (Electrical/Mechanical) for Assessment, Planning, Design and Supervision on the Construction of Mogolane Primary School Within Bushbuckridge Local Municipality	<b>Assessment, Planning, Design and Construction Supervision</b>	Fees	On Hold	Department of Public Works (MP) <b>Ms Phumelele Mathenjwa</b> (Project Leader) Tel: (013) 766 8943
Professional Services (Electrical/Mechanical) for Assessment, Planning, Design and Supervision on the Construction of Matlong Primary School Within Bushbuckridge Local Municipality	<b>Assessment, Planning, Design and Construction Supervision</b>	Fees	Construction	Department of Public Works (MP) <b>Ms Phumelele Mathenjwa</b> (Project Leader) Tel: (013) 766 8943
Professional Services (Electrical/Mechanical) for Assessment, Planning, Design and Supervision on the Construction of Mbatini Primary School Within Bushbuckridge Local Municipality, Mpumalanga	<b>Assessment, Planning, Design and Construction Supervision</b>	Fees	Tender	Department of Public Works (MP) <b>Ms Phumelele Mathenjwa</b> (Project Leader) Tel: (013) 766 8943
Electrical Service Provider for Turnkey Electrification Programme for 286 Households at Mathuneni (Matsulu) within the City of Mbombela Local Municipality	<b>Preliminary and detail design, contract administration, construction supervision and commissioning</b>	R 3.14 m	Completed	City of Mbombela <b>Mr Lucky Machipa</b> (Project Manager) Tel: (013) 759 2232
Professional Services (Electrical/Mechanical) for Assessment, Planning, Design and Supervision on the Construction of Sekhukhusa Secondary School Within Bushbuckridge Local Municipality	<b>Assessment, Planning, Design and Construction Supervision</b>	17m	Completed	Department of Public Works (MP) <b>Ms Phumelele Mathenjwa</b> (Project Leader) Tel: (013) 766 8943
Professional Services (Electrical/Mechanical) for Planning, Design and Contract Administration and Construction Supervision of Storm Damaged facilities in Various District within the Mpumalanga	<b>Design, Documentation, Contract Administration, Construction Supervision and Commissioning</b>	70m	Completed	3 <sup>rd</sup> Dimension Quantity Surveyors <b>Mr Rodgers Sithole</b> (Principal Agent) Tel: 072 942 1154
Installation of High Mast and Streetlights in various areas within Mbombela Local Municipality	<b>Preliminary and Detail Design, Tender Documentation, Contract Administration, Construction Supervision and Commissioning</b>	R 2.1 m	Completed	KPT Consulting Engineers & Mbombela Local Municipality <b>Mr Lucky Machipa</b> (Project Manager) Tel: (013) 759 2232
Electrification of 500 Stands at Phumlani in accordance to Municipal Standards and Specification	<b>Preliminary and detail design, tender documentation, contract administration, construction supervision and commissioning</b>	R 4.2m	Completed	Pienaar & Erwee Engineers & Mbombela Local Municipality <b>Ms Nonhle Zungu</b> (Project Manager) Tel: (013) 759 2263
Electrification of Households at Mataffin in accordance to Eskom Standards and Specification	<b>Concept and Viability, detail design, Surveying, Wayleaves, DESD and Eskom Approval</b>	R 7.5m	Completed	Pienaar & Erwee Engineers & Mbombela Local Municipality <b>Mr Lucky Machipa</b> (Project Manager) Tel: (013) 759 2232

Electrification of 178 Stands at Phumlani A in accordance to Municipal Standards and Specification	<b>Preliminary and detail design, tender documentation, contract administration, construction supervision and commissioning</b>	R 1.4m	Completed	Pienaar & Erwee Engineers & Mbombela Local Municipality <b>Ms Linge Ngubane (Project Manager)</b> Tel: (013) 759 9091
Electrification of 44 Households in Masakhane and Inkululeko Villages in accordance to Eskom Standards and Specification	<b>Preliminary and detail design, contract administration, construction supervision and commissioning</b>	R 1.8 m	Completed	Jindal Mining (SA) Pty Ltd <b>Ms Busisiwe Masuku (Project Manager)</b> Tel: (071) 362 6336
Electrification of 44 Households in Masakhane and Inkululeko Villages in accordance to Eskom Standards and Specification	<b>Preliminary and detail design, contract administration, construction supervision and commissioning</b>	R 1.8 m	Completed	Jindal Mining (SA) Pty Ltd <b>Ms Busisiwe Masuku (Project Manager)</b> Tel: (071) 362 6336
Electrification of 42 Stands in Thembeke township in accordance to Eskom Standards and Specification	<b>Preliminary and detail design, tender documentation, contract administration, construction supervision and commissioning</b>	R 0.5 m	Completed	KPT Consulting Engineers & Mbombela Local Municipality <b>Ms Nonhle Zungu (Project Manager)</b> Tel: (013) 759 2263
Electrification of 378 Stands in Entokozweni township in accordance to Eskom Standards and Specification	<b>Preliminary and detail design, tender documentation, contract administration, construction supervision and commissioning</b>	R3.5 m	Completed	KPT Consulting Engineers & Mbombela Local Municipality <b>Ms Linge Ngubane (Project Manager)</b> Tel: (013) 759 9091
Electrification of 500 Stands in Mhlaba Cross Phase 2 in accordance to Eskom Standards and Specification	<b>Preliminary and detail design, contract administration, construction supervision and commissioning</b>	R 4.9 m	Completed	Greater Tzaneen Municipality <b>Ms Helen Mosoatsi (Project Manager)</b> Tel: (015) 307 8165

Our Project Leader has gained valuable experience in the design and management of large and medium electrical engineering projects while executing projects for his previous Employers.



## Contact us»»»

**Head Office Physical Address:** 4<sup>th</sup> Floor; Office 407; Caltex Building; 32 Bell Street; Nelspruit; 1200

**Satellite Offices Physical Address:**

12 Amatola Place; Bisho; 5605 (**Eastern Cape**)

3A Robbin Fix; Birdswood Ext 26; Richards Bay; 3900 (**KZN**)

Stand No 8295; Wolmaransstad Ext 18; 2630 (**North West**)

16A Bok Street; Polokwane; 0699 (**Limpopo**)

26 Cadac Crescent; Crystal Park; Benoni; 1500 (**Gauteng**)

No 5 Monridge Office Park; 2 Kekewich Drive; Kimberly; 8301; Northern Cape; (**Northern Cape**)

**Postal Address:** P.O. Box 1100; White River; 1240

**Tel:** 087 550 2551/061 433 6468

**Cell:** 083 999 6133/076 250 2900

**Fax:** 086 549 7957

**Email:** [admin@sanddconsulting.co.za](mailto:admin@sanddconsulting.co.za)

**Website:** [www.sanddconsulting.co.za](http://www.sanddconsulting.co.za)



## Company Information

**Company Registration No.:** 2014/053488/07

**CSD Reference No.:** MAAA0226978

**Tax Reference No.:** 9583180170

**Vat No.:** 4750265755

**Eskom Vendor No.:** 11087731

**CIDB CRS No.:** 10148642

**B-BBEE.:** Level 1

